

QUEST HOLIDAY GIFT GUIDE

1



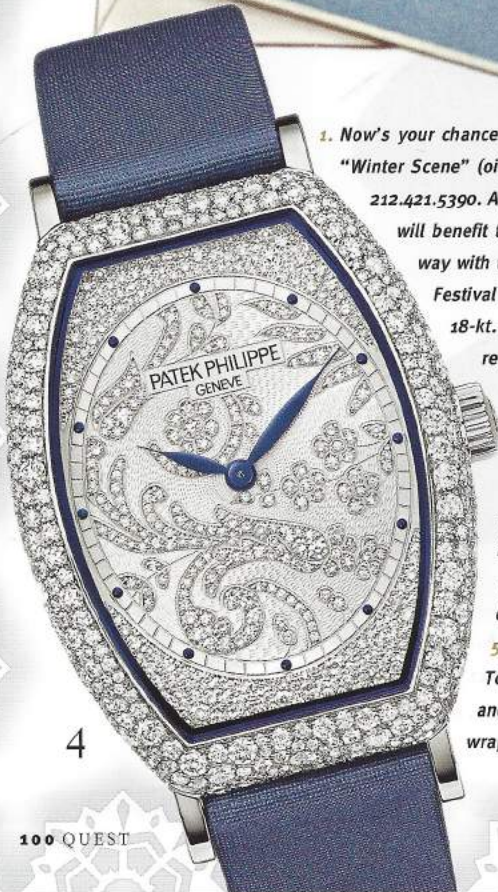
2



3



4



1. Now's your chance to acquire John Henry Twachtman's "Winter Scene" (oil on board), at Wally Findlay Galleries: 212.421.5390. A portion of sales from this exhibition will benefit the Fund for Park Avenue. 2. Find your way with the Christmas star—or with Mauboussin's Festival Necklace, a one-of-a-kind piece in 18-kt. white gold and diamonds. Price upon request: 212.752.4300. 3. Make every gift extra special with Engraved Holiday Nutcracker Gift Enclosures from Pickett's Press. \$25 for set of 10: pickettspress.com. 4. Amaze her with Patek Philippe's electric blue brushed-satin Ladies' Gondolo, with hand-guillochéd dial set with diamonds. \$116,000; At Tiffany & Co. 5. Cynthia Vincents's animal-print Topanga Canyon scarf in dark blues, navy, and taupe is a perfect neutral to get wrapped up in. \$145; cynthiavincenet.net.